



# Family Support at Country Pumpkins Day Nursery

As an early years setting we are privileged to meet many children and families at the start of their journey through education and set the foundations for the rest of their lifetimes. With this role comes responsibility for us to ensure our families are well supported through the early stages of childhood, however this may look. With every family and child being different we have an adaptable approach to the support we offer depending on needs. Below are ways that we support families during their time with us at Country Pumpkins.

Designated Safeguarding lead: Rhian Miles  
Deputy DSL: Katie White and Louise Wickersham  
SENCO: Natalie Buckland

Contact nursery via email: [Beckford@countrypumpkinsnursery.co.uk](mailto:Beckford@countrypumpkinsnursery.co.uk) or  
telephone: 01386 339157

Early Help is a pathway to supporting you and your child as they grow up when you or they may need further support or guidance.

Providing early help to our children and families at Country Pumpkins means we can improve outcomes for children, families, and communities, providing support as soon as a problem emerges.

Early Help can support children and their families who may be struggling with a wide variety of issues from struggles with routines and family rules to navigating the Special Educational Needs system.

Early help relies upon local groups and people in the community, sometimes we work together to help children, young people, and their families.

Everyone needs help at some time in their lives and therefore an ethos of early help is important for any school.



# At Country Pumpkins Day Nursery we provide a solid foundation for all children by:

<p>Listening and talking</p>	<p>At Country Pumpkins Nursery we operate an open-door policy, all members of staff are happy to discuss any concerns families may be having at all any stage of Early years development. This may be helping with sleep regressions, how to start weaning, potty training, or preparing children for school. We are also here to support parents with issues such as mental health, balancing work, new siblings, or difficult relationships.</p> <p>If you any need any advice or help, a member of staff will always be there to listen. If you require a private space or time, we can accommodate to this.</p>
<p>Personal, Social and Emotional Development</p>	<p>With the Early Years Foundation Stage we are legally required to focus on developing children's personal, social and emotional skills from 0-5. This will look different depending on age; activities and language will be adapted according to understanding. This will support children to become: well rounded, able to recognise and manage emotions, deal with conflicts, form positive relationships, and be confident as individuals. We do this through modelling positive relationships, guiding conflict such as sharing as well as labelling and supporting strategies to help big emotions and embedding concepts such as kindness and respect in everything we do.</p>
<p>Value individuality</p>	<p>At Country Pumpkins we embrace that every child is unique and different. We have a holistic and adaptable approach to learning and empower children to take autonomy in their learning. Each child's interests are heard and the environment adapted and altered to incorporate this into their day.</p>
<p>Loving environment</p>	<p>We value the key person approach to children with each child (and family) having a named person that supports learning and communication. As key people we will form a positive relationship with your child, create connections, and be an active role in their development and progression. All adults within the setting strive to create a positive and caring environment for all children and families at the setting.</p>

<p>SEN support</p>	<p>All staff in our setting have a solid understanding of possible Special Educational Needs within early years. Research shows the importance of early identification of difficulties to ensure children have positive long-term outcomes and progression through school. If a possible need was suspected a discussion can be held and interventions put in place to best support the child and family. We have close connections with local services such as Speech and Language and the Early Years Team.</p>
<p>Health visitors</p>	<p>We have a close connection with local health visitors and if problems were to arise, we can discuss approaches to support from health and educational perspectives (with parental consent). We will also recommend speaking to health visitors if you are experiencing difficulties at home, they may be able to support in areas such as eating and sleeping.</p>



Family Hub - Worcestershire Family Hub is online. This is available at: <https://www.worcestershire.gov.uk/virtual-family-hub>

Gloucestershire Family Hub can be found at: [Families First - Gloucestershire County Council](#)

Youth and Community Centres-  
Wallace House, Evesham - <https://www.wallacehouse.org.uk/>  
Adventure Playground, Evesham-  
<https://eveshamadventureplayground.org/>

Abbey Fields Community Centre, Winchcombe-  
<https://www.abbeyfieldscommunitycentre.co.uk/>

Wheatpieces Community Centre, Tewkesbury-  
<https://www.wheatpiecesparishcouncil.com/wheatpieces-community-centre/>

Stoke Orchard Community Centre, Cheltenham-  
<https://stokeorchard.org/>



Foodbanks

Trussell Trust Food bank,  
Tewkesbury-

<https://tewkesbury.foodbank.org.uk/>

Trussell Trust Food bank, Pershore-

<http://pershore.foodbank.org.uk/>

Trussell Trust Food bank,  
Cheltenham-

<http://cheltenham.foodbank.org.uk/>



Early Help Family Support District Team -

Below you will find the contact numbers for the Family Support District team in the local area. There is also the link to a parent request for support form.


The Worcester Team telephone on 01905 843339

The Wychavon Team telephone on 01905 844229

The Gloucestershire Children's Helpdesk on: 01452 426565

Worcestershire County Council request form:  
<https://www.worcestershire.gov.uk/early-help-family-support/early-help-family-support-district-teams>

Gloucestershire County Council request form:  
[https://www.glosfamiliesdirectory.org.uk/kb5/gloucs/glosfamilies/family.page?familychannel=1\\_1](https://www.glosfamiliesdirectory.org.uk/kb5/gloucs/glosfamilies/family.page?familychannel=1_1)



## Libraries

Local libraries can be a brilliant resource for families to use for both books, online resources as well as community groups.

Broadway Library-

<https://www.worcestershire.gov.uk/library/broadway-library>

Evesham Library-

<https://www.worcestershire.gov.uk/library/evesham-library>

Pershore Library-


<https://www.worcestershire.gov.uk/library/pershore-library>

Tewkesbury Library-

<https://www.gloucestershire.gov.uk/libraries/library-locations-and-opening-hours/tewkesbury-library/>

Winchcombe Library-

<https://www.gloucestershire.gov.uk/libraries/library-locations-and-opening-hours/winchcombe-library/>



## Early Help Family Support Service:

The Early Help Family Support Service is delivered by Worcestershire Children First directly to families permanently living in Worcestershire who have children aged 0-18 years old and need help and support specifically from a Family Support Worker. For more information, please visit:

<https://www.worcestershire.gov.uk/council-services/childrens-services/early-help-family-support>

The GlosFamilies Directory is a brilliant resource created by Gloucestershire County Council to support families within Gloucestershire. It provides a directory of support groups, networks and where to seek advice for a multitude of challenges.

Please visit:

<https://www.glosfamiliesdirectory.org.uk/kb5/gloucs/glosfamilies/home.page>



The Starting Well Partnership offer a range of health services which support both children and families experiencing a range of health issues.

Worcestershire:

[www.startingwellworcs.nhs.uk](http://www.startingwellworcs.nhs.uk)

Worcestershire: If your child is under 5 years old and you need advice on issues such as feeding, behaviour, or toileting you can contact the Telephone Advisory Service on 0300 123 9551 (Monday - Friday 9am til 3pm).

Book an appointment | Starting Well [www.startingwellworcs.nhs.uk](http://www.startingwellworcs.nhs.uk)

Gloucestershire: You can contact the health visiting team to discuss any health and development concerns you may have regarding your child by calling our 1 simple number: 01905 520 032. If your child is under 5 years old and you need advice on issues such as feeding, behavior or constipation, contact our Telephone Advisory Service (TAS) on: 01905 520 032 Mon-Fri 9am-1pm Gloucestershire Health Visiting Service- GHC

<https://www.ghc.nhs.uk/our-teams-and-services/children-and-young-people/physical-health/health-visiting/>

CAMHS Parent Support Team <https://www.ghc.nhs.uk/our-teams-and-services/children-and-young-people/camhs/>

### School Nursing

School Nursing is a scheme offered in both Worcestershire and Gloucestershire to ensure children are developing healthy lifestyles and habits.

Worcestershire

School Health Nursing Worcestershire: Starting Well

[www.startingwellworcs.nhs.uk](http://www.startingwellworcs.nhs.uk)

Gloucestershire

School Health Nursing Gloucestershire: School Nursing

<https://www.ghc.nhs.uk/our-teams-and-services/children-and-young-people/physical-health/school-nursing/>

School health nurses offer a range of services such as home visits, health needs assessments, time4u drop-in service, school aged hearing and national child measurement programme to support the needs of children and their families.



## Mental health

Worcestershire

Social Prescribing:: Onside Advocacy, Worcestershire

[www.onside-advocacy.org.uk](http://www.onside-advocacy.org.uk)

Social Prescribers support you to take control of your health and look after yourself by making connections with the different types of community support available.

I am worried about my Child's mental health | Herefordshire and Worcestershire Health and Care NHS Trust

[www.hacw.nhs.uk](http://www.hacw.nhs.uk)

Home | Healthy Minds [www.whct.nhs.uk](http://www.whct.nhs.uk)

Gloucestershire

GloSFamilies Directory | Child and Adolescent Mental Health

Service (CAMHS) <https://www.ghc.nhs.uk/our-teams-and-services/children-and-young-people/camhs/>

Winston's Wish - giving hope to grieving children

[www.winstonswish.org](http://www.winstonswish.org)

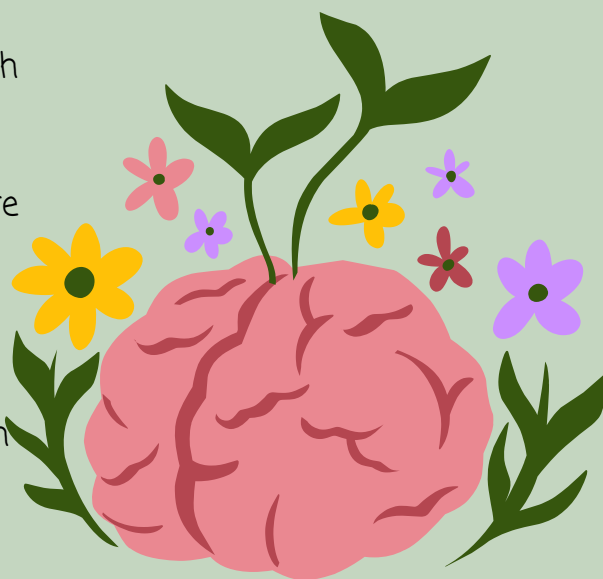
Winstons Wish provide support for children and young people following the death of a sibling, parent, or a person important to a child.

Promoting mental health and wellbeing:

<https://learning.nspcc.org.uk/child-health-development/child-mental-health>

Children's mental health - Every Mind Matters

<https://www.nhs.uk/every-mind-matters/>



## Online Safety

If you have concerns around the safety of your child or a child you know online, the following links will provide you with information, support, and advice to help understand the risks and keep your child safe online:

Smartie the Penguin | Childnet

<https://www.thinkuknow.co.uk/parents/>

Online safety | Barnardo's [www.barnardos.org.uk](http://www.barnardos.org.uk)

<http://educateagainsthate.com/>

[www.internetmatters.org](http://www.internetmatters.org)

<https://www.bbc.com/ownit/the-basics/8-tips-for-staying-safe-online>

## Relationships

The following services and links offer information, advice, and intervention on healthy relationships for your family and children:

<https://www.nspcc.org.uk/keeping-children-safe/sex-relationships/healthy-relationships/>

Challenges at home: Harmony at Home -

<https://www.worcestershire.gov.uk/council-services/childrens-services/virtual-family-hub/harmony-home>

Home - Gloucestershire Domestic Abuse Support Service

<https://www.gdass.org.uk/>



SEND (Special Educational Needs and/or Disabilities)  
All staff in our setting have a solid understanding of possible Special Educational Needs within early years. Research shows the importance of early identification of difficulties to ensure children have positive long term outcomes and progression through school. If a possible need was suspected a discussion can be held and interventions put in place to best support the child and family. We have close connections with local services such as Speech and Language and the Early Years Team. If you are looking for information or advice the following links will help you:

SEND Local Offer | Worcestershire County Council  
<https://www.worcestershire.gov.uk/council-services/childrens-services/send-local-offer>

SEND Information, Advice, Support Service SENDIASS  
Worcestershire and Herefordshire  
<https://www.worcestershire.gov.uk/sendias>

SEND Information, Advice, Support Service SENDIASS  
Gloucestershire <https://sendiasglos.org.uk/>

### Parenting Support

The Starting Well Partnership offer a range of parenting support, information, groups, and courses. For information on the groups available please visit: [www.startingwellworcs.nhs.uk](http://www.startingwellworcs.nhs.uk)

Parent Talk is an online hub offering information, advice, and a free confidential online chat with a parenting advisor.

[Parent Talk - Support for Parents from Action For Children](#)

Homestart can work with you to provide one to one support in the family home each week. This service provides support tailored to your needs and can help you as parents they learn to cope and build confidence to provide as best you can for your children.

[www.home-startsw.org.uk](http://www.home-startsw.org.uk)

Parenting support in Gloucestershire: Glosfamilies Directory | Parenting  
<https://www.glosfamiliesdirectory.org.uk/kb5/gloucs/glosfamilies/home.page>



## Finance, Housing and Employment

If you are facing challenges around employment and income, please contact the local job centre who can with offer support with jobseekers' allowance, incapacity benefit, employment and support allowance and income support:

Tewkesbury Job Centre Council Offices, Gloucester Road, Tewkesbury, GL20 5TT Telephone: 08001690190

Evesham Job Centre 3 High Street, Evesham WR11 4DA Telephone: 08001690190

Cheltenham Job Centre 7 North Street, Cheltenham GL50 4DJ Telephone: 08001690190

Worcester Job Centre Plus, Haswell House, Sansome Street, Worcester, WR1 1UZ  
Telephone: 0845 6043719

Citizen's Advice Bureau- Worcestershire

Citizen's Advice Bureau Worcester Citizens Advice - Worcester Citizens Advice Bureau and WHABAC (Worcester Housing and Benefits Advice Centre) [www.citizensadviceworcester.org.uk](http://www.citizensadviceworcester.org.uk)

Citizen's Advice Bureau- Gloucestershire

Citizen's Advice Bureau Gloucester & District Citizens Advice Bureau [www.gloscab.org.uk](http://www.gloscab.org.uk)

## Housing

Worcestershire

For information on what financial and housing support is available in Worcestershire, please visit:

[Housing and finances | The Family Hub | Worcestershire County Council](#)

Gloucestershire

For information on what financial and housing support is available in Gloucestershire, please visit:

<https://www.gloucester.gov.uk/housing/>

## Do you have a family member in prison?

Do you have a family member in prison which is having an impact on your child? Support is available to work with both the person in prison and your family. <https://www.nicco.org.uk/>

Families First provides support and guidance in a safe space, to enable the whole family to cope with the demands of having a partner, and parent, in prison: <https://families-first.uk/>

## Get Safe

If you are worried your child is at risk of being tricked, forced, or made to work in the criminal world please speak to a member of staff and visit Get Safe for help and information:

<https://www.worcestershire.gov.uk/GetSafe-keepingchildrenandyoungpeoplesafefromcriminalexploitation>



If you are experiencing any of these challenges or issues affecting family life, please contact a member of staff who will be happy to provide you with further advice and support.

